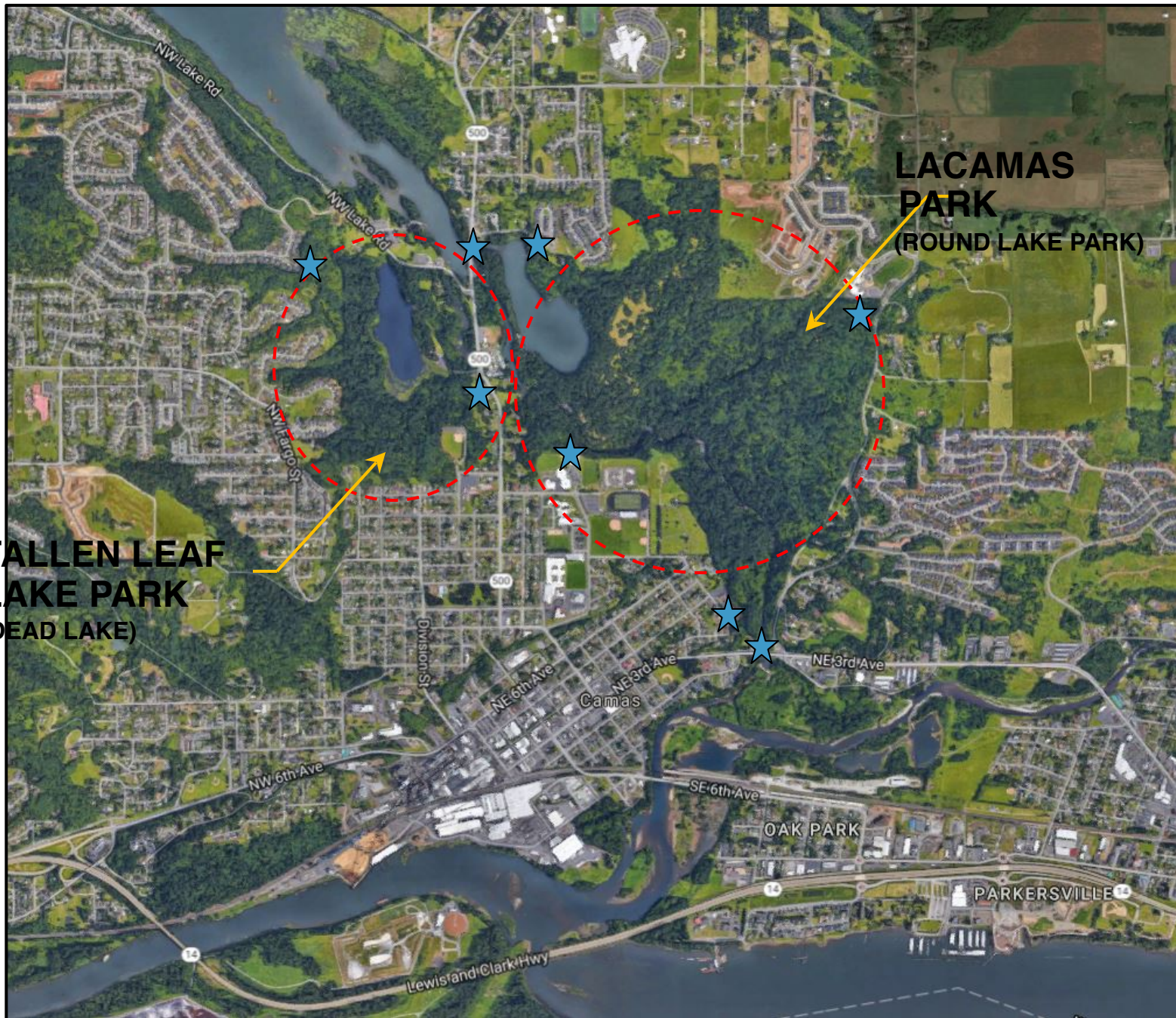


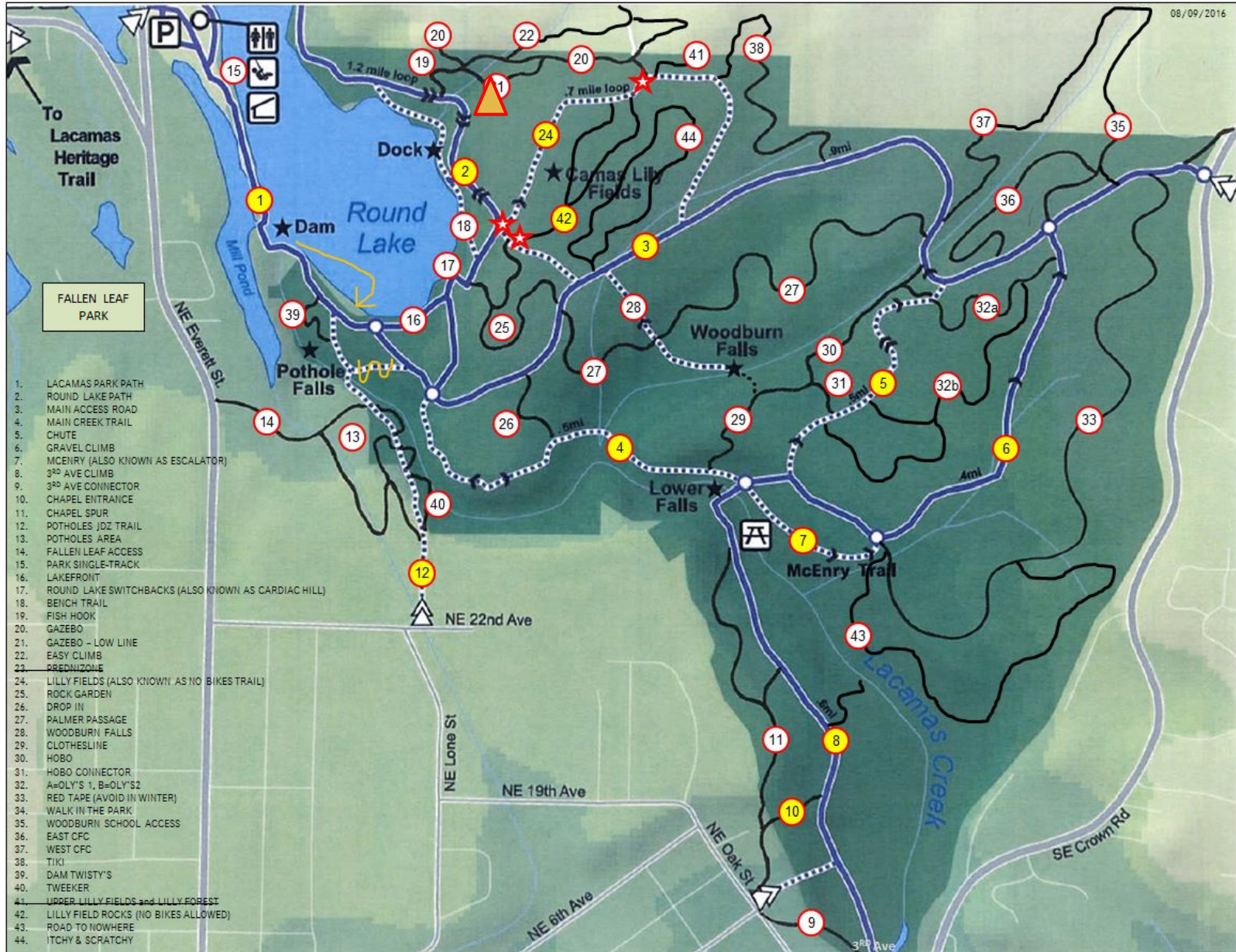
**FALLEN LEAF
LAKE PARK
(DEAD LAKE)**

**LACAMAS
PARK
(ROUND LAKE PARK)**

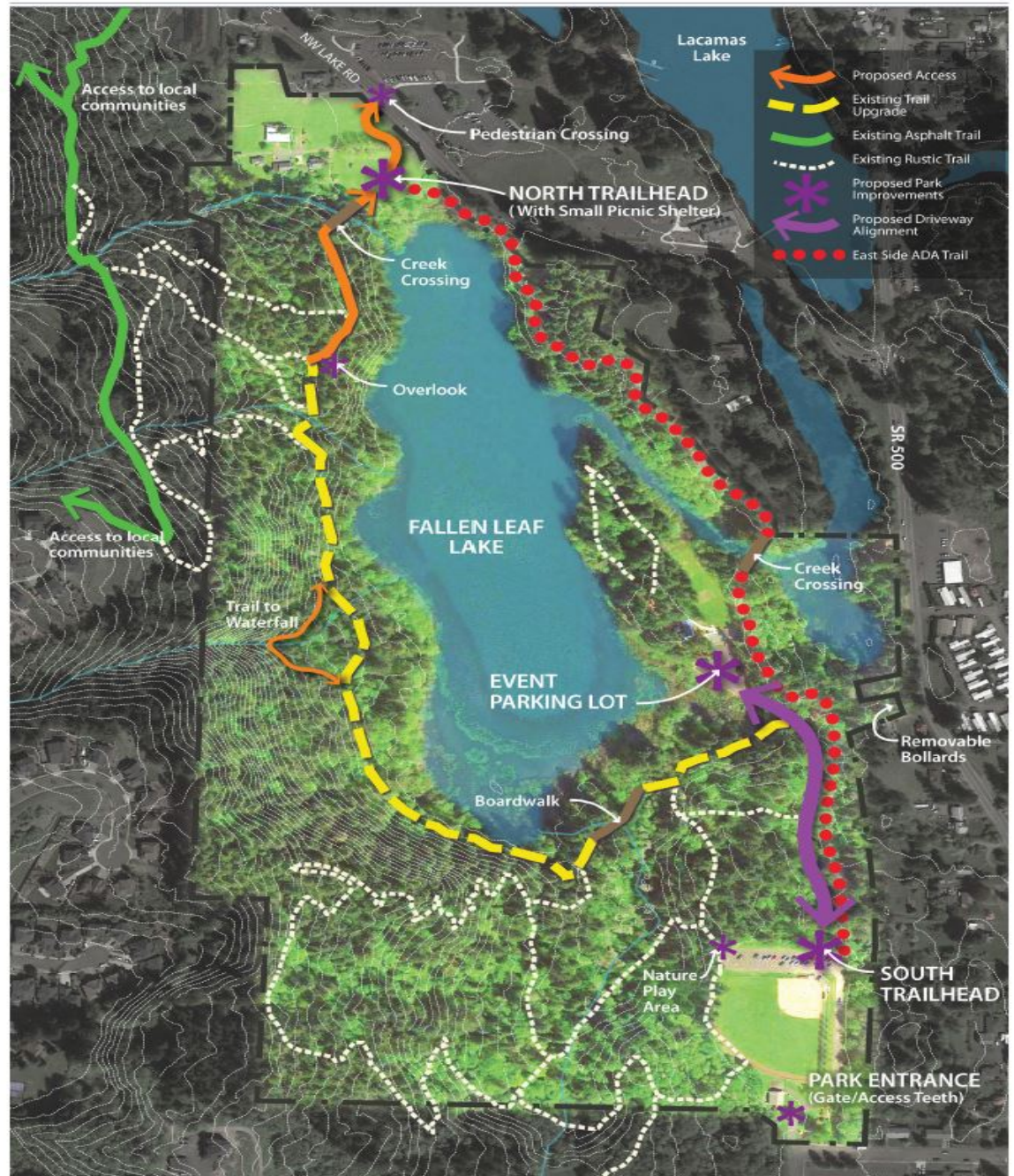
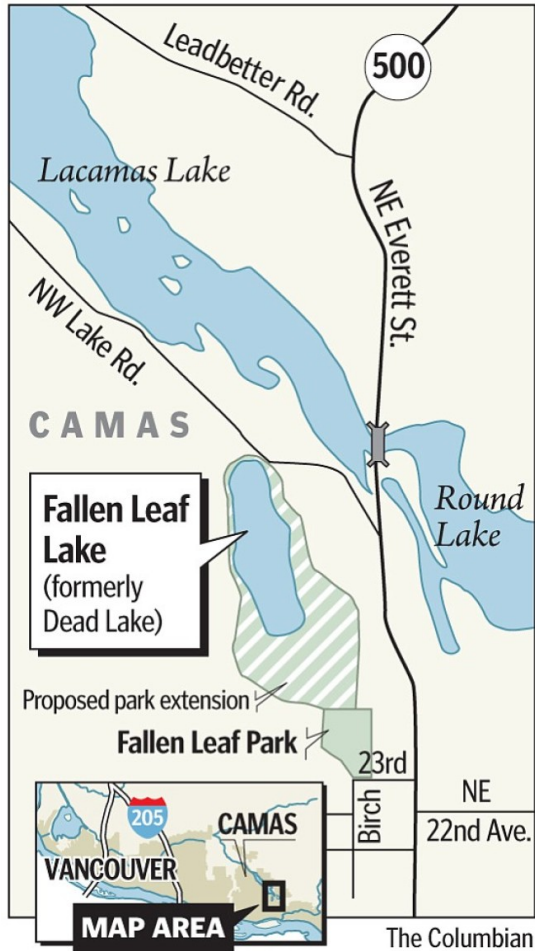


LACAMAS PARK

MAPPING & EMERGENCY ACCESS IS A PRIORITY



FALLEN LEAF LAKE PARK











NO CHAIN SAWS







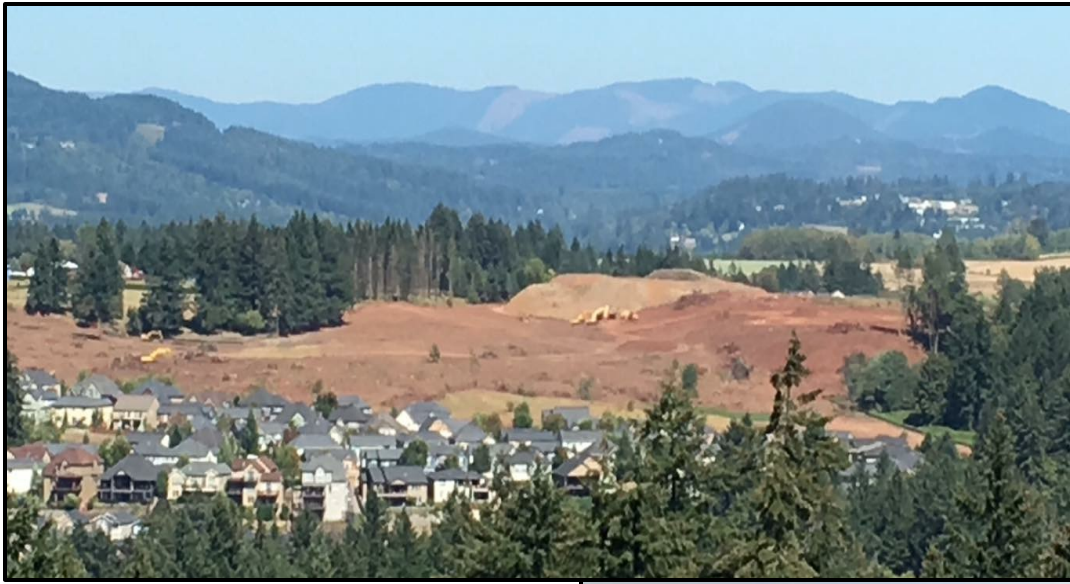
CONDITIONS and TRAIL HISTORY



MAIN CREEK TRAIL IS HEAVILY TRAVELLED BY WALKERS

LILLY FIELDS





CHALLENGES –

**EROSION AND RUNOFF ISSUES
CAUSED BY DEVELOPMENT.**

**MANAGING AN ADDITIONAL
330 HOMES ON THE
NORTHSIDE OF THE PARK
INCLUDING ENTRANCE AND
ACCESS POINTS.**

**THE PARK WILL GET
HAMMERED AND KEEPING UP
ON THE CONDITIONS IS GOING
TO BE A HUGE CHALLENGE.**





SECTIONS OF THE PARK HAVE QUITE A BIT OF POISON OAK. THIS IS TYPICALLY IN THE ROCKIER SECTIONS OF THE PARK.

IVY IS ALSO A MAJOR ISSUE AND THE BIGGEST CAUSE OF DOWNED TREE'S.



North Shore Lacamas Lake
Conservation and Recreation Vision Map

Legend

- Lakes
- Major Rivers and Streams
- City of Camas Urban Growth Area (UGA)
- Major Roads
- City Ownership (Camas and Vancouver)
- Clark County (Parks or Environmental Services)
- School District Ownership (Camas and Vancouver)
- State Ownership
- Columbia Land Trust Ownership
- Existing Soft-Surface Recreational Trails
- Existing Trailhead with Parking
- Existing Boat Launch Area

Potential Future Trails, Conservation Opportunities, and Planned Facilities

- Proposed Bicycle/Pedestrian Path (road conversion)
- Proposed Soft-Surface Trail
- Proposed Regional Trail Corridors (Intertwine)
- Proposed New Bridge or Boardwalk
- Potential Future Public Facility
- Proposed Trailhead with Parking
- Conservation Opportunity (habitat and viewshed)
- Proposed Sports Field Complex
- Potential New Boat Launch Area

This vision map reflects concepts and facilities proposed by various conservation and recreation organizations and is intended to serve as a conceptual framework to guide future recreational trail and conservation planning efforts on and around the north shore of Lacamas Lake. The locations of proposed trail corridors and facilities are conceptual. The vision is non-regulatory and subject to voluntary land owner participation.

DRAFT
September 22, 2016

Map Prepared Jeff Krueger in conjunction with the City of Camas and the Columbia Land Trust

Scale
0 1,000 2,000 Feet
= 5 Acres

The map shows the North Shore of Lacamas Lake, bordered by Unincorporated Clark County to the north and east, and Vancouver and Camas to the south and west. Key features include:

- Lakes and Waterways:** Lacamas Lake, Green Mountain Creek, Lacamas Creek, and Round Lake.
- Roads:** Route 500, NE 28th St., NW Lake Road, SE 15th St., NW Parker St., NW 38th Ave.
- Schools:** Union High School, Shahala Middle School, Skyridge Middle School, Grass Valley Elementary, Woodburn Elementary, Camas High School.
- Parks and Open Space:** Lacamas Prairie Natural Area, Camp Currie, Harmony Sports Complex, Grass Valley Park, Lacamas Regional Park.
- Trails and Paths:** Proposed Camp Bonneville Trail, Heritage Trail, and various soft-surface trails.
- Facilities:** Future School Site, Potential Future Non-Motorized Boat Launch, Proposed Community Center, Lacamas Lodge, Safe Crossing Between Lakes.
- Ownership:** Various areas are designated for different ownership types, including City, School District, State, and Columbia Land Trust.

HOW CAN YOU HELP -

Looking for others to step up and help lead the charge.

We need knowledgeable crew leaders.

Past year and a half – Trail Alignment delays.

Spring weeknight Bi-monthly's and a few weekend options.

Drainage and sustainability focus.

Bigger reroutes, new option considerations and Northern access points.

Rider volunteer efforts could be rewarded in future projects like Green Mountain, Lewis River expansion, etc.

Current communications are virtually all through Facebook but changing.

Send name/contact info to Lacamas@NW-trail.org if interested.

To work as an individual volunteer in a Clark County Park, you need to contact Karen and get signed up. Karen.Llewellyn@clark.wa.gov or